



BIMESPRO HGL horizontal glass-working lathe

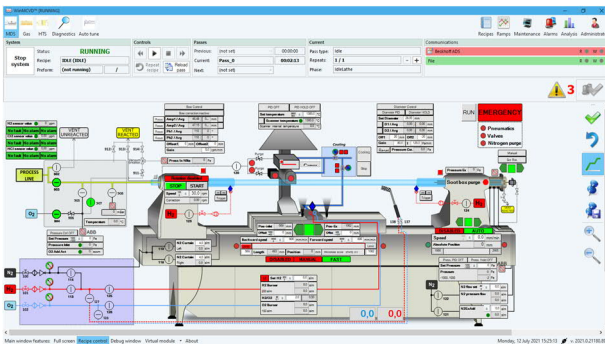
Introduction & Application

HGL glass working lathes in different configurations and sizes are used in substrate tube preparation, welding, stubbing, preform polishing, jacketing and stretching of quartz glass. They are often used for rounding asymmetrically shaped preforms and in preparation of micro-structured preforms for drawing.

Description

HGL horizontal glass working lathe is based on standard preform and glass working lathes from well-known supplier. Lathes are equipped with a number of options, required by customers in procedures related to preparation of substrate tubes and preforms, in jacketing, stretching and general glass working operations. Advanced options permit most demanding glass working operations on silica glass tubes, preforms and microstructured assemblies. The options include:

- different main H₂/O₂ burners, auxiliary and hand burners
- IR pyrometer or scanner for PID temperature control,
- camera vision system for diameter and bow control,
- different models of scroll chucks,
- motorized tailstock and/or headstock for stretching or compressing preforms and rods,
- rotary joint and gas supply cabinet,
- exhaust box with precise tube inner pressure control,
- vacuum pump with inverter for controlled vacuum during jacketing,



HGL lathes are customized for every customer and equipped with control systems, electrical cabinets, safety devices and other required equipment (gas purifiers, gas panels).

Control system

VGL is operated by OptiFACT Windows-based control system and software, used over the whole platform of Bimes equipment. Please ask for details from our specialists.

Specifications (standard lathe)

Parameter	Value
Total lathe length	2810 / 3438 mm
Axis height above floor	1250 mm
Axis height above carriage	290 mm
Distance between chuck tips	max 1600 mm
Bore size	80 (option 125mm)
Standard preform diameter	10 - 80 mm
Burner H ₂ /O ₂ flow standard	200/100 slm
Vacuum pump	Option

Vacuum control	inverter for pump
Preform gases	O ₂ , N ₂ , SF ₆ , He, Cl ₂
Temperature control	IR Pyrometer, IR scanner as option
Tube diameter control	CCD camera system as option
Tube inner pressure control	±2 Pa
Burners	metal half ring/glass tip, other as option

For more information and quotes please write to sales@bimespro.com or info@bimespro.com